



Wolfington Road, SE27 | £525,000

02087029888

[westnorwood@pedderproperty.com](mailto:westnorwood@pedderproperty.com)

**pedder**  
We live local







# In General

- Two bedrooms
- Private garden
- Great location
- Large kitchen diner
- Cellar
- Period conversion

# In Detail

Set within an elegant Victorian conversion, this beautifully presented two bedroom ground floor garden flat on Wolfington Road offers an exceptional blend of period charm and modern living.

Extending to over 800 sq ft, the property features a charming reception room with a striking original fireplace, high ceilings, ornate cornicing, plantation shutters and original wood flooring. The stylish, dual-aspect kitchen provides ample space for dining and is flooded with natural light, with double doors opening directly onto a well-maintained westerly facing private garden, perfect for relaxing and entertaining on sunny days.

Accommodation includes two double bedrooms, with the principal bedroom benefiting from French doors leading to the garden, alongside a beautifully renovated contemporary bathroom suite. The property also enjoys the added advantage of a basement, ideal for additional storage.

Well positioned on a sought-after residential street, the property is well served by excellent transport links, with West Norwood and Tulse Hill stations offering swift connections to London Victoria, Blackfriars and London Bridge. A variety of local amenities, independent cafés and green spaces are all within easy reach, making this a wonderful place to call home.

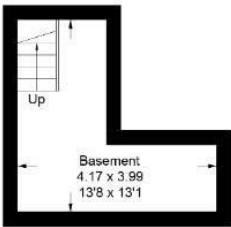
EPC: D | Council Tax Band: C | Lease: 105 Years Remaining | SC: £320 pa | GR: £400 pa | BI: £1,060 pa



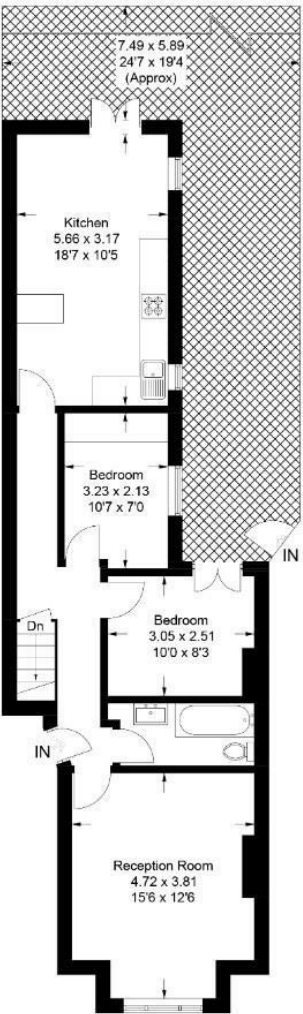
# Floorplan

## Wolffington Road, SE27

Approximate Gross Internal Area = 64.8 sq m / 697 sq ft  
Basement = 10.6 sq m / 114 sq ft  
Total = 75.4 sq m / 811 sq ft

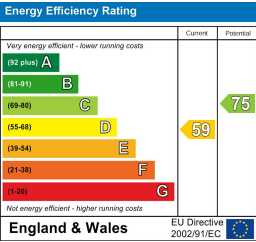


Basement



Ground Floor

Copyright www.pedderproperty.com © 2026  
These plans are for representation purposes only as defined by RICS - Code of Measuring Practice.  
Not drawn to Scale. Windows and door openings are approximate. Please check all dimensions, shapes and compass bearings before making any decisions reliant upon them.



Pedder Property Ltd trading as Pedder for themselves and for the vendor/landlord of this property whose agents they are, give notice that (1) these particulars do not constitute any part of an offer or contract, (2) all statements contained within these particulars are made without responsibility on the part of Pedder or the vendor/landlord, (3) whilst made in good faith, none of the statements contained within these particulars are to be relied upon as a statement of representation or fact, (4) any intending purchaser/tenant must satisfy him/herself by inspection or otherwise as to the correctness of each of the statements contained within these particulars, (5) the vendor/landlord does not make or give either Pedder or any person in their employment any authority to make or give representation or warranty whatsoever in relation to this property.